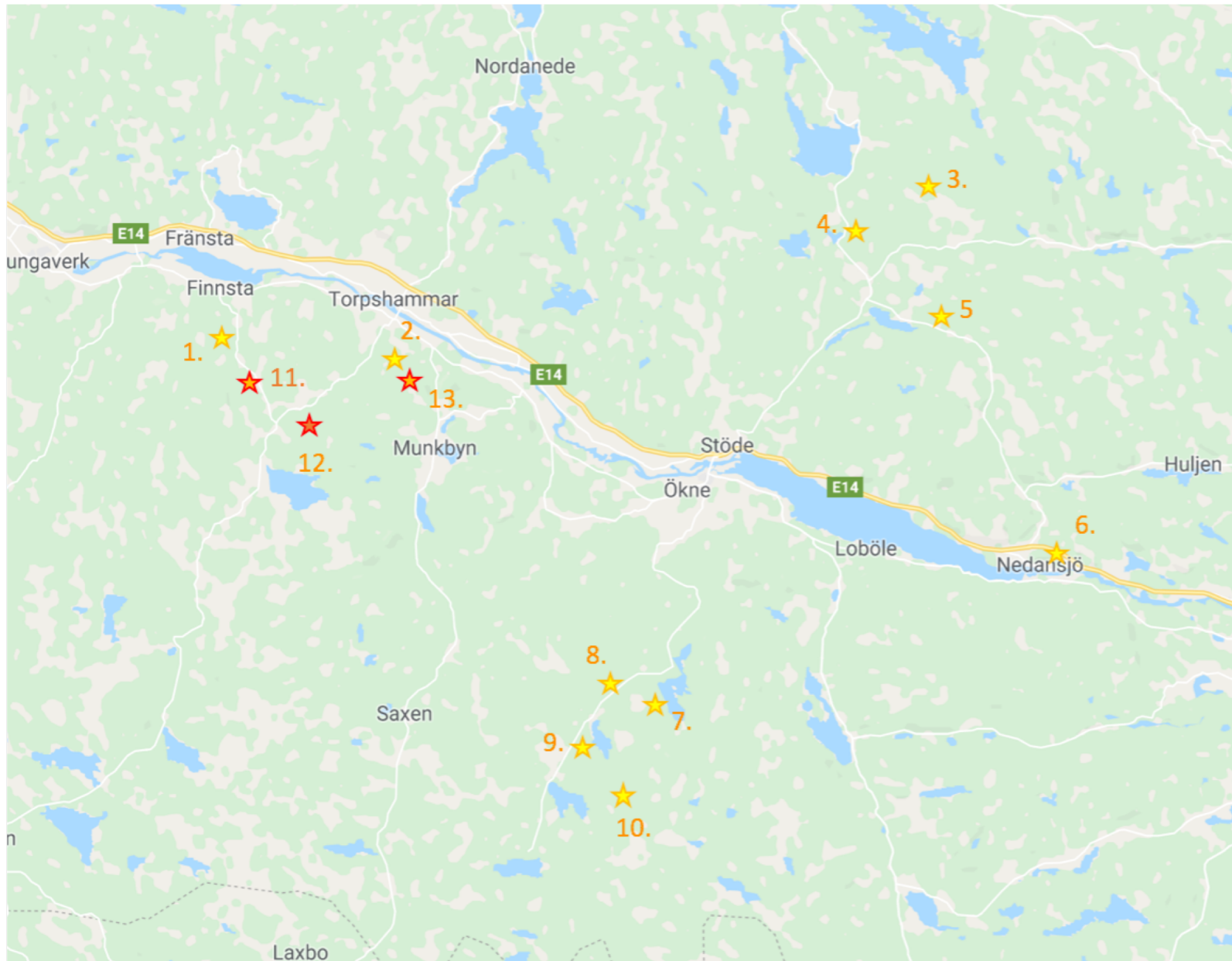




# Dubbelögade bastborrhår – Fältstudier 2017

---

LINA VIKLUND, MITTUNIVERSITETET



## Fältförsök 2017

- Mindre dubbelögd bastborre
- Interaktioner mellan dubbelögade bastborrar
- Monitoring
- Granbarkborre (Linnéuniversitetet)

# Fältförsök 2017

---

- Stora försöket v. 26 – v. 33
- Monitoringförsöket v. 21 – v. 39
- Fångsterna räknas av oss och SLU
- Granbarkborreförsöket - Små fångster



# Dubbelögade bastborrar

---

- Större dubbelögad bastborre (*Polygraphus poligraphus*) Feromon: *R*-(-)-terpinen-4-ol
- Nordlig dubbelögad bastborre (*Polygraphus punctifrons*) Tidigare okänt
- Mindre dubbelögad bastborre (*Polygraphus subopacus*) Tidigare okänt



Foto: U Schmidt 2014



# “The Russian Connection” – *Polygraphus proximus*

Map 1. Distribution of *P. proximus*, including uncertainties (uncertainties are detailed in the text under the map)

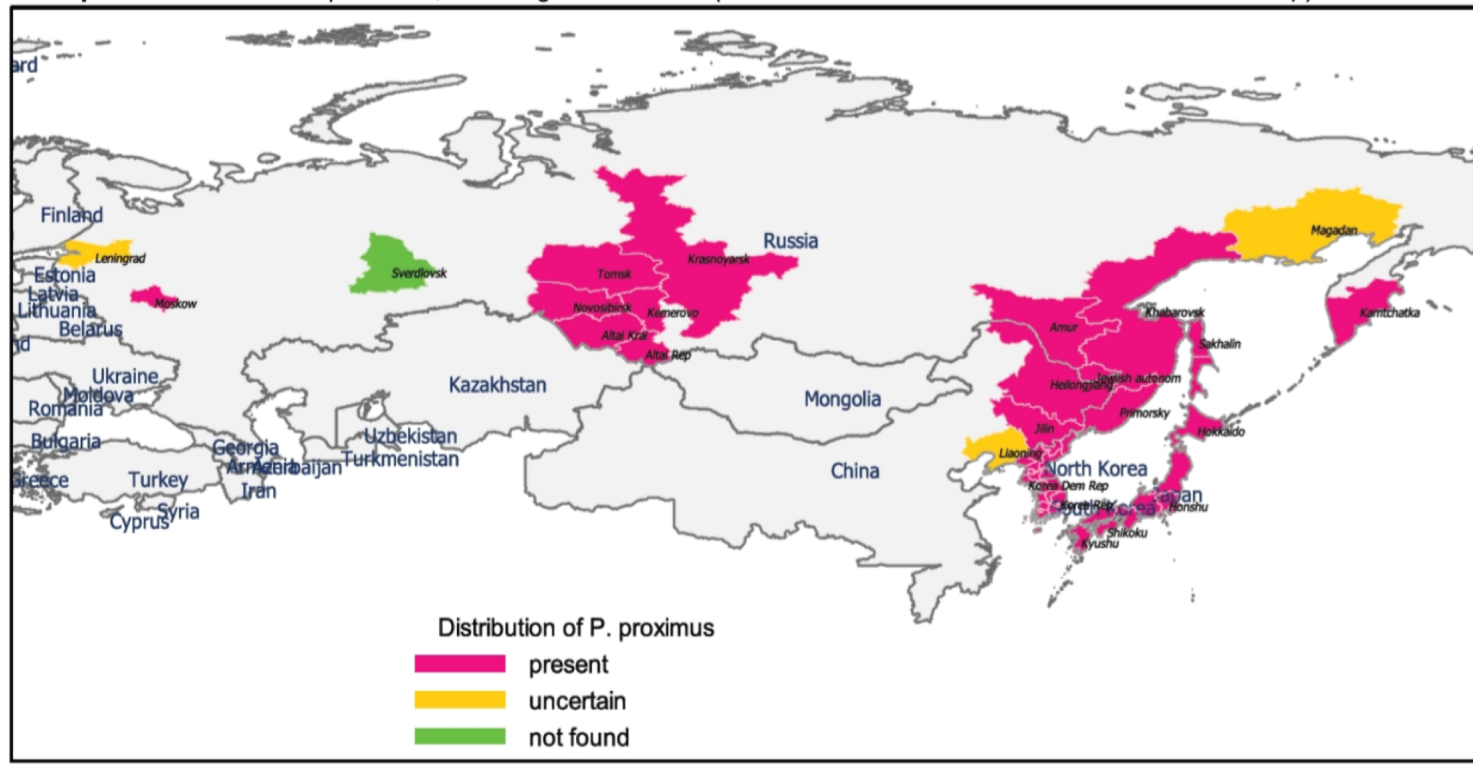


Bild lånad från "EPPO Pest risk analysis for *Polygraphus proximus*", 2014.

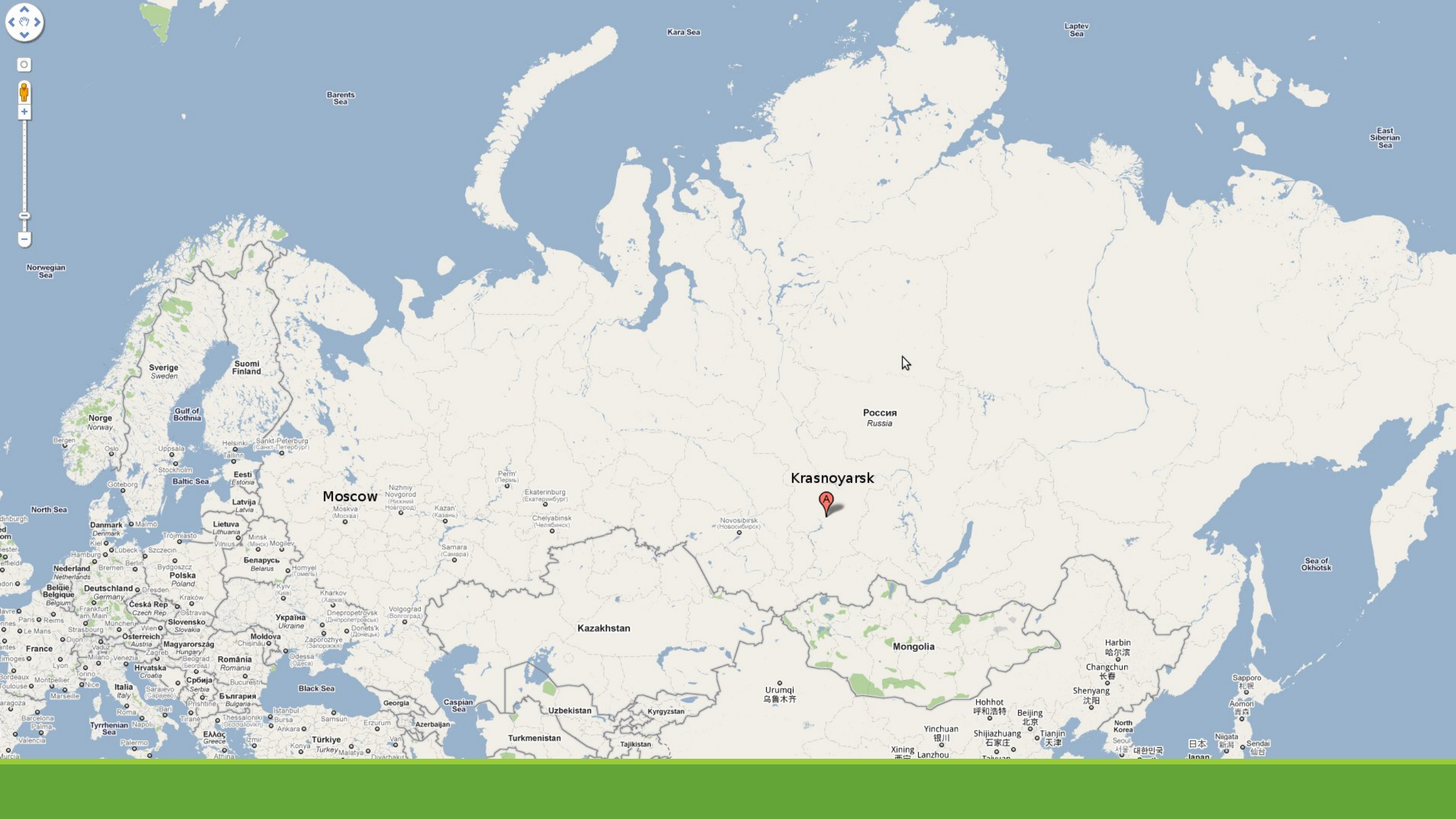
# *Polygraphus proximus*

---

”If introduced, the probability of establishment is high, and the probability of eradication or containment would be very unlikely due to the hidden life stages of the pest and the fact that it might not be detected before it has already established and caused damage. It is also very likely that the pest would spread both naturally and by human-assistance through the movement of infested material”

- EPPO Pest risk analysis for *Polygraphus proximus* 2014





# V.N. Sukachev Institute of Forest, Siberian Branch, Russian Academy of Sciences

---



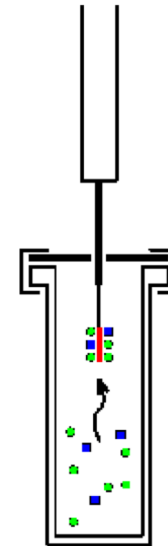


# SPME

---



Foto: R. Rahmani



SPME

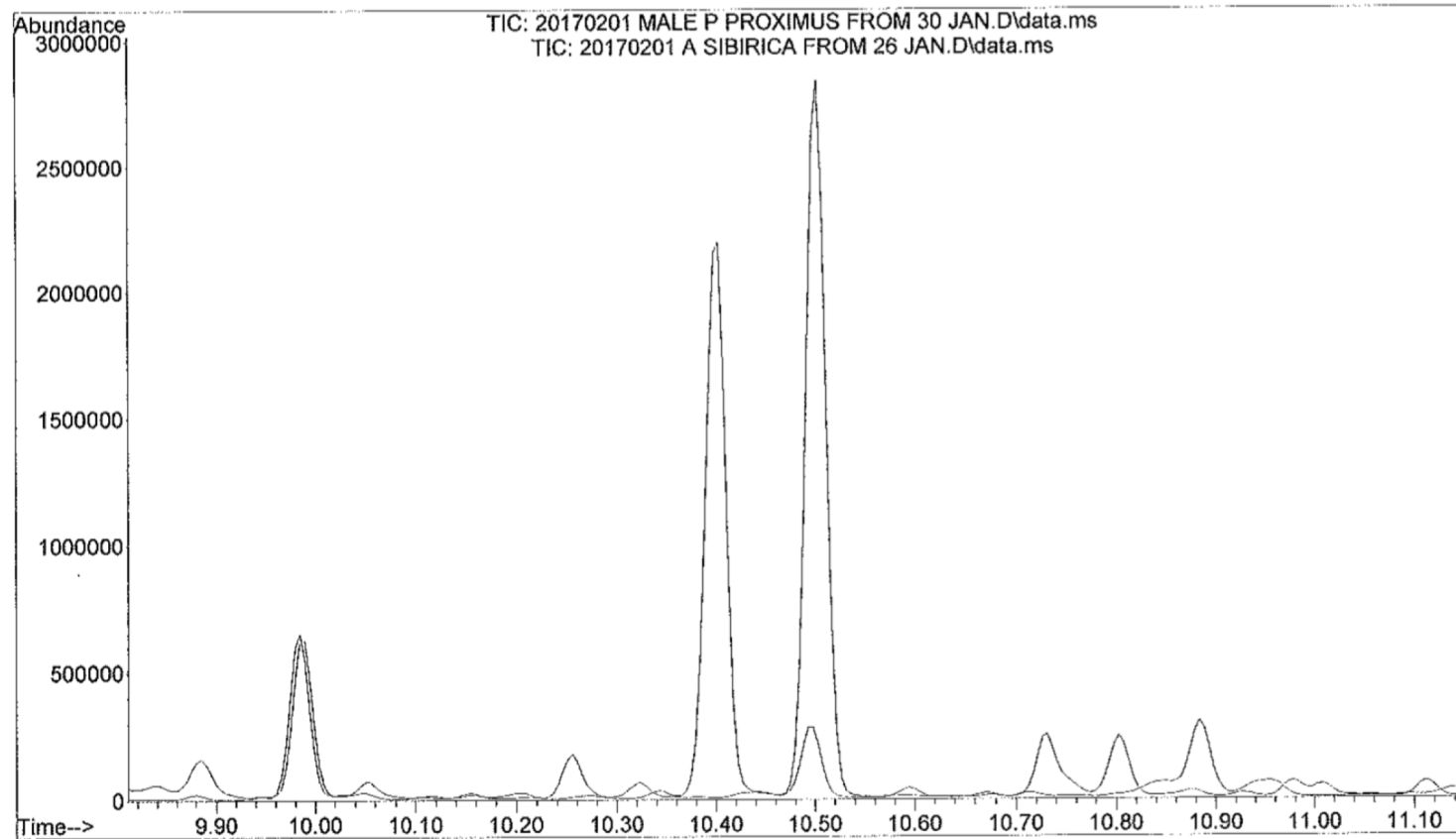
# GC-MS

---



# Resultatet av resan

---



Lina Viklund

010-142 82 92

[lina.viklund@miun.se](mailto:lina.viklund@miun.se)

